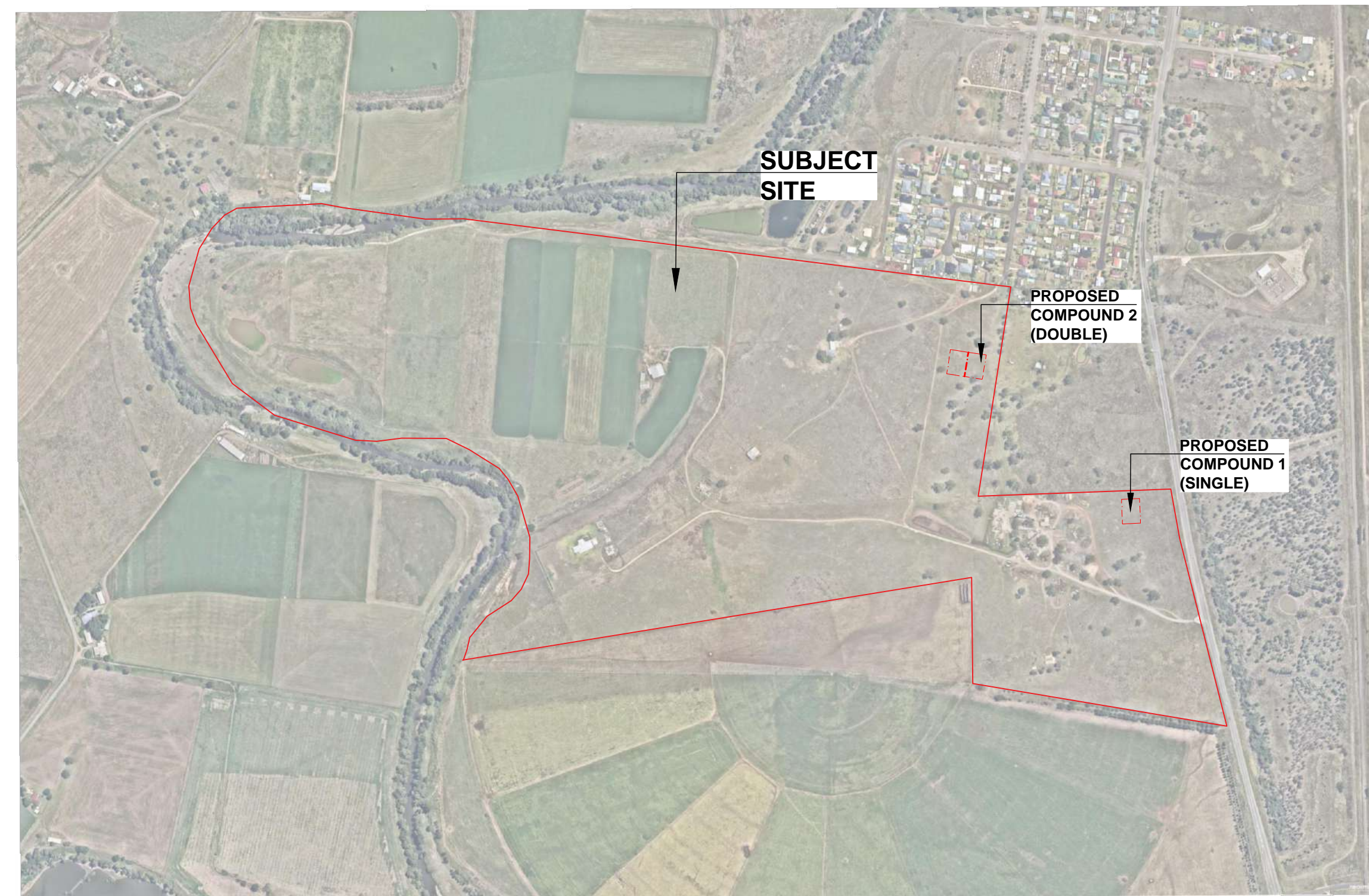


DEVELOPMENT APPLICATION

PROPOSED BATTERY ENERGY STORAGE SYSTEM (BESS)


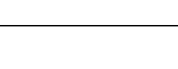


**981 New England Hwy,
Aberdeen**

DRAWING SCHEDULE

LDA00	COVERSHEET
LDA01	SITE ANALYSIS & CONTEXT
LDA02	LANDSCAPE PLAN: COMPOUND 1 (SINGLE)
LDA03	PLANT SCHEDULE, IMAGES, DETAIL & ELEVATION C2 (MATURED)
LDA04	ELEVATION C2 (1-3 YEARS)
LDA05	VIEWPOINT 1 (SINGLE)
LDA06	VIEWPOINT 2 (SINGLE)
LDA07	VIEWPOINT 3 (SINGLE)
LDA08	LANDSCAPE PLAN: COMPOUND 2 (DOUBLE)
LDA09	ELEVATION D1 + D2 (1-3 YEARS)
LDA10	ELEVATION D1 + D2 (MATURED)
LDA11	VIEWPOINT 1 (DOUBLE)
LDA12	VIEWPOINT 2 (DOUBLE)
LDA13	VIEWPOINT 3 (DOUBLE)
LDA14	VIEWPOINT 4 (DOUBLE)
LDA15	VIEWPOINT 5 (DOUBLE)
LDA16	MAINTENANCE SPECIFICATION

NOT FOR CONSTRUCTION

LANDSCAPE ARCHITECT:		BAR SCALE:		ASPECT:		CLIENT:		ENGINEERING AND PLANNING:		PROJECT:		TITLE:			STATUS:																				
<div><div></div><div>Conus Landscape Architecture 138 Grandview Rd, New Lambton Hts, NSW 2305. p. 02 4950 9195 e. info@conuslandscapearchitecture.com.au w. conuslandscapearchitecture.com.au abn. 52 144 562 756</div><div><p>Australian Institute of Landscape Architects</p></div></div> <div>Registered Landscape Architect: Anton Conus AILA No. 8420</div>						Hive Battery Developments Pty Ltd		HDB		<div><table><tr><td></td><td></td><td></td></tr><tr><td></td><td></td><td></td></tr><tr><td>B</td><td>18/12/2023</td><td>Final submission</td></tr><tr><td>A</td><td>13/12/2023</td><td>Preliminary concept for review</td></tr><tr><td>REV</td><td>DATE</td><td>NOTATION/AMENDMENT</td></tr></table></div> <div>DO NOT SCALE DRAWINGS. CHECK ALL DIMENSIONS. FIGURED DIMENSIONS TAKE PRECEDENCE. THESE DRAWINGS ARE NOT FOR CONSTRUCTION</div>								B	18/12/2023	Final submission	A	13/12/2023	Preliminary concept for review	REV	DATE	NOTATION/AMENDMENT	Proposed Battery Energy Storage System (BESS)			COVER SHEET			Development Application		
B	18/12/2023	Final submission																																	
A	13/12/2023	Preliminary concept for review																																	
REV	DATE	NOTATION/AMENDMENT																																	
										981 New England Hwy, Aberdeen																									
												ISSUE:			DWG No:		PLOTTED:		DRAWN:		CHECKED:		APPROVED:												
												B			LDA 00		1		DS		AC		AC												





Key

- Building setbacks
- PMF
- Approx. 1% AEP flood level
- Existing trees
- Easement

Site Plan Details:

- Subject Site:** 981 New England Highway
- Proposed Compound 1 (Single):** Located near the center of the site.
- Proposed Compound 2 (Double):** Located near the top right of the site.
- All Day Concrete:** Located near the bottom right of the site.
- Streets:** Abercairney Tce, Segenhoe St, Shanon Cl, New England Highway.
- Wind Directions:** Prevailing Hot Northwest winds, Prevailing Cold Southeast winds.
- Time Markers:** Noon, Evening, Morning.
- Other Features:** Building setbacks, PMF, Approx. 1% AEP flood level, Existing trees, Easement.

NOT FOR CONSTRUCTION

LANDSCAPE ARCHITECT:			BAR SCALE:			ASPECT:			CLIENT:			ENGINEERING AND PLANNING:			PROJECT:			TITLE:			STATUS:																										
 <p>Conus Landscape Architecture 158 Grandview Rd, New Lambton Hts, NSW 2305.</p> <p>p. 02 4950 9195 e. info@conuslandscapearchitecture.com.au w. conuslandscapearchitecture.com.au abn. 52 144 562 756</p> <p>Registered Landscape Architect: Anton Conus AILA No. 8420</p>			 <p>Australian Institute of Landscape Architects</p>			 <p>0 20 50 100M</p> <p>1:2500 @ A1</p>						<p>Hive Battery Developments Pty Ltd</p> <p>Quintas Energy</p>			<p>HDB</p>			<table><tr><td></td><td></td><td></td></tr><tr><td>B</td><td>18/12/2023</td><td>Final submission</td></tr><tr><td>A</td><td>13/12/2023</td><td>Preliminary concept for review</td></tr><tr><td>REV</td><td>DATE</td><td>NOTATION/ AMENDMENT</td></tr></table> <p>DO NOT SCALE DRAWINGS. CHECK ALL DIMENSIONS. FIGURED DIMENSIONS TAKE PRECEDENCE. THESE DRAWINGS ARE NOT FOR CONSTRUCTION</p>						B	18/12/2023	Final submission	A	13/12/2023	Preliminary concept for review	REV	DATE	NOTATION/ AMENDMENT	<p>Proposed Battery Energy Storage System (BESS)</p> <p>981 New England Hwy, Aberdeen</p>			<p>SITE ANALYSIS</p>			<table><tr><td>SCALE:</td><td>DATE:</td><td>JOB No:</td></tr><tr><td>1:2500</td><td>18/12/23</td><td>23.40</td></tr></table>			SCALE:	DATE:	JOB No:	1:2500	18/12/23	23.40
B	18/12/2023	Final submission																																													
A	13/12/2023	Preliminary concept for review																																													
REV	DATE	NOTATION/ AMENDMENT																																													
SCALE:	DATE:	JOB No:																																													
1:2500	18/12/23	23.40																																													
															<table><tr><td>ISSUE:</td><td>DWG No:</td><td>PLOTTED:</td></tr><tr><td>B</td><td>LDA01</td><td>1</td></tr></table>			ISSUE:	DWG No:	PLOTTED:	B	LDA01	1	<table><tr><td>DRAWN:</td><td>CHECKED:</td><td>APPROVED:</td></tr><tr><td>DS</td><td>AC</td><td>AC</td></tr></table>			DRAWN:	CHECKED:	APPROVED:	DS	AC	AC															
ISSUE:	DWG No:	PLOTTED:																																													
B	LDA01	1																																													
DRAWN:	CHECKED:	APPROVED:																																													
DS	AC	AC																																													

PLANT SCHEDULE

Botanic Name	Common Name	Size (m)	Pot Size	Spacing
Trees				
Acacia salicina	Willow Wattle	8H x 4W	200mm	As shown
Brachychiton populneus	Kurrajong	10H x 9W	25L	As shown
Callistemon viminalis	Weeping Bottlebrush	8H x 6W	25L	As shown
Callitris glaucophylla	White Cypress	10H x 4W	25L	As shown
Eucalyptus blakelyi	Blakelyi's Red Gum	20H x 12W	25L	As shown
Eucalyptus melliodora	Yellow Box	20H x 12W	25L	As shown
Geijera parvifolia	Willow Wilga	9H x 6W	25L	As shown
Shrubs				
Callsitemon citrinus	Crimson Bottlebrush	3H x 3W	200mm	1.5m
Dodonaea viscosa	Hop Bush	2.5H x 2W	200mm	1.5m
Olea microcarpa	Narrow-leaved Mock Olive	5H x 4W	140mm	2m
Olearia elliptica	Sticky Daisy Bush	2H x 2W	140mm	1m
Climbers and Groundcovers				
Lomandra longifolia	Mattrush Grass	0.8H x 1W	tube	2/m2
Themeda australis	Kangaroo Grass	1H x 1W	tube	4/m2



Acacia salicina



Brachychiton populneus



Callistemon citrinus



Callitris glaucophylla



Callistemon viminalis



Dodonaea viscosa



Eucalyptus blakelyi



Eucalyptus melliodora



Geijera parvifolia



Lomandra longifolia



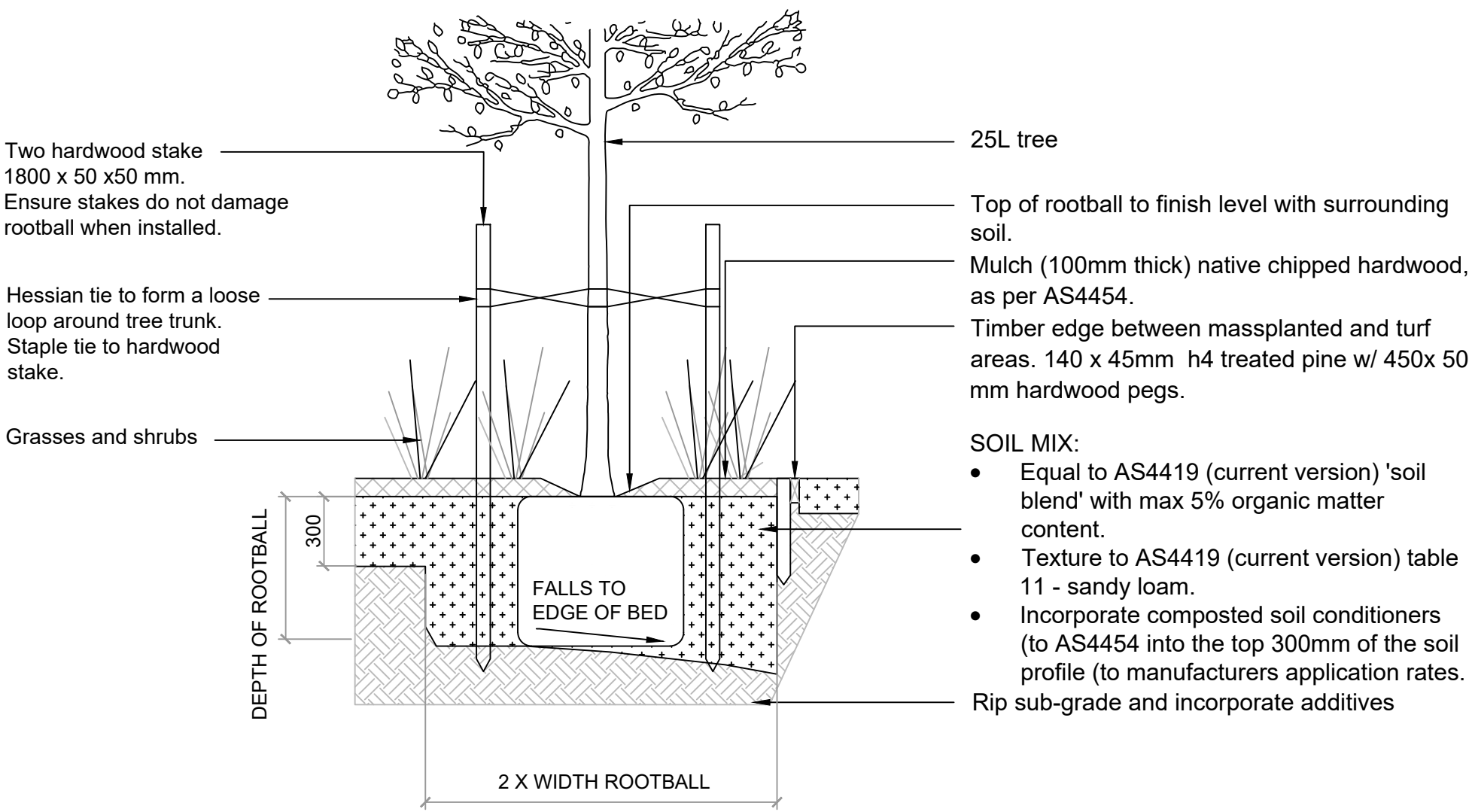
Olea microcarpa



Olearia elliptica

NOTES:

1. All garden beds to contain premium imported garden mix with 5% organics mixed with site soil
2. Provide slow-release fertiliser to each plant to manufacturer's instructions
3. All garden beds to contain 80mm depth native hardwood chip mulch, similar to ANL 'Forest Fines'
4. All trees to be staked by 1800 x 50 x 50mm hardwood timber stakes fastened with hessian ties
5. All trees to comply with NATSPEC specifications
6. All turf to be Couch on 50mm premium topdress
7. All garden edges to be H4 treated pine





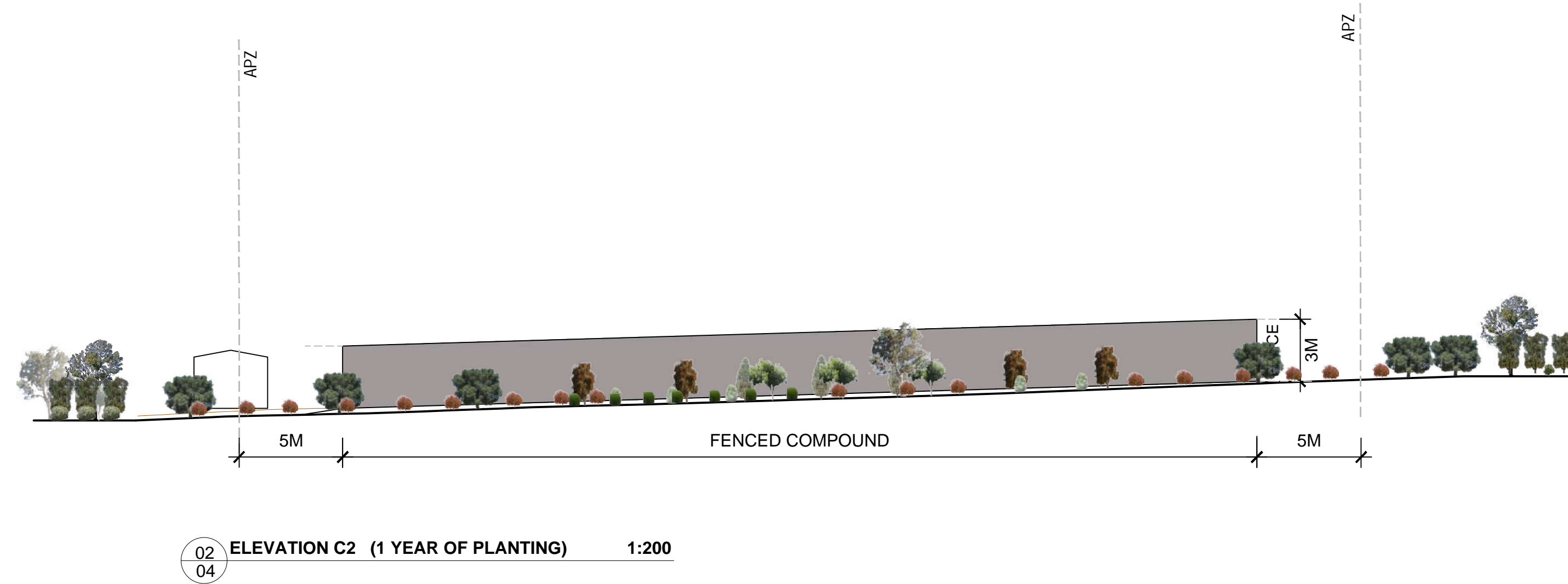
01 03 TREE DETAIL 1:25 25L TREE IN MASS PLANTING - GENERAL

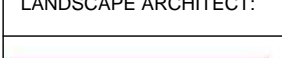
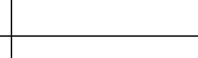
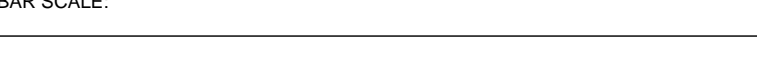


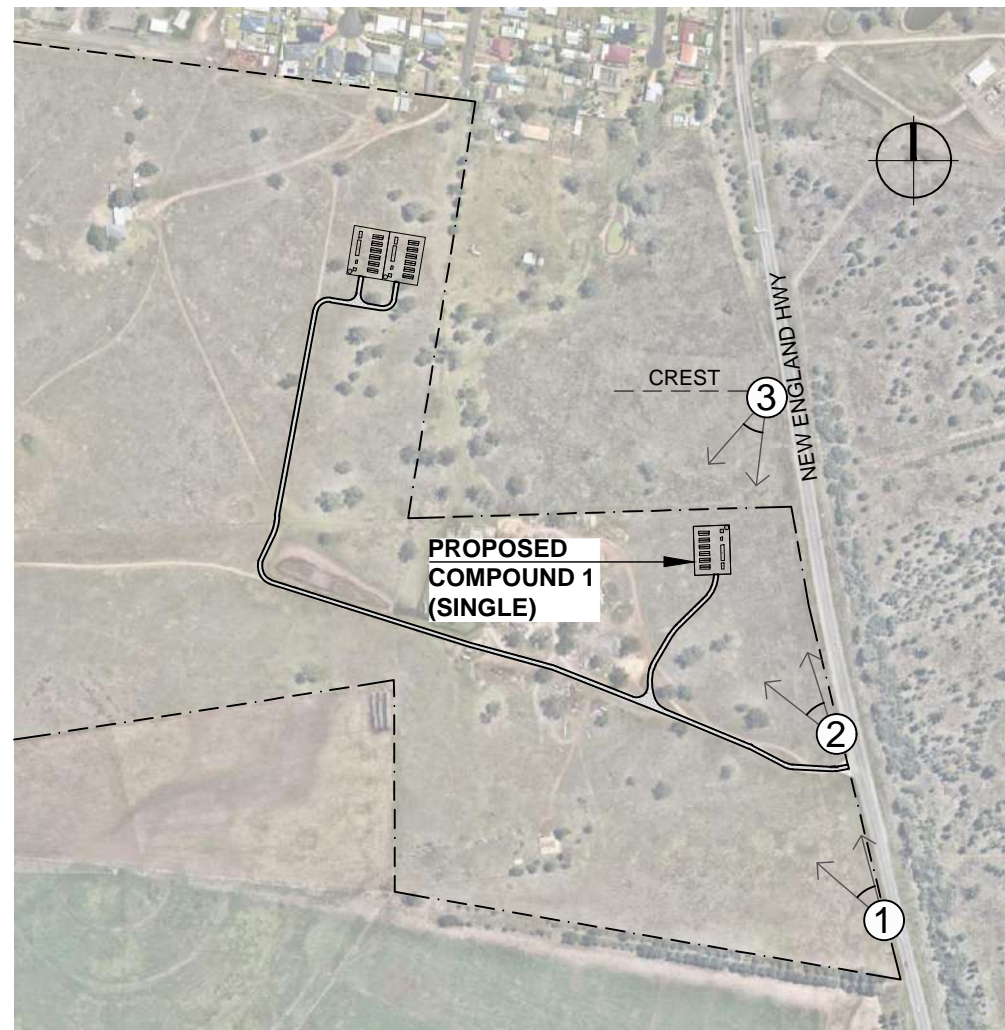
02 03 ELEVATION C2 (MATURED STAGE) 1:200

NOT FOR CONSTRUCTION



LANDSCAPE ARCHITECT:	BAR SCALE:	ASPECT:	CLIENT:	ENGINEERING AND PLANNING:		PROJECT:	TITLE:	STATUS:
 Conus Landscape Architecture 158 Grandview Rd, New Lambton Hts, NSW 2305. p. 02 4950 9195 e. info@conuslandscapearchitecture.com.au w. conuslandscapearchitecture.com.au abn. 52 144 562 756			Hive Battery Developments Pty Ltd	HDB		Proposed Battery Energy Storage System (BESS) 981 New England Hwy, Aberdeen	PLANT SCHEDULE, IMAGES, DETAIL & ELEVATION C2 (MATURED)	Development Application
Registered Landscape Architect: Anton Conus AILA No. 8420							ISSUE: B DWG No: LDA03 PLOTTED: 1	SCALE: AS INDICATED DATE: 18/12/23 JOB No: 23.43
							DRAWN: FV + DS CHECKED: AC APPROVED: AC	

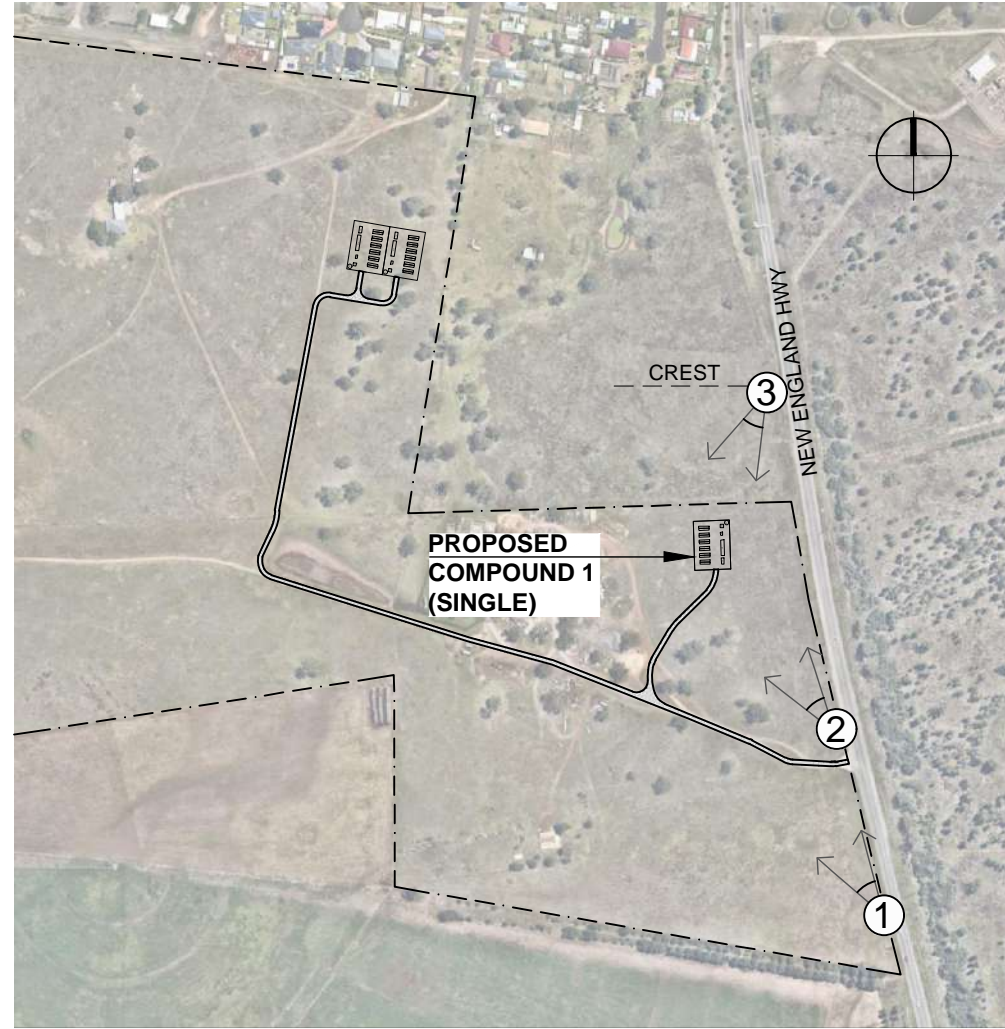


LANDSCAPE ARCHITECT:		BAR SCALE:		ASPECT:		CLIENT:		ENGINEERING AND PLANNING:		PROJECT:		TITLE:		STATUS:							
<div><p>Conus Landscape Architecture 158 Grandview Rd, New Lomblon Hts, NSW 2305.</p><p>p. 02 4950 9195 e. info@conuslandscapearchitecture.com.au w. conuslandscapearchitecture.com.au o. 62 144 562 756</p><p>conus LANDSCAPE ARCHITECTURE</p><p>Registered Landscape Architect: Anton Conus AILA No. 8420</p></div>	<div><p>Australian Institute of Landscape Architects</p></div>	<div><p>1:200 @ A1</p></div>	<div><p>Hive Battery Developments Pty Ltd</p><p>Quintas Energy</p></div>	<div><p>HDB</p></div>			Proposed Battery Energy Storage System (BESS)		ELEVATION C2 (1-3 YEARS)		Development Application										
					B	18/12/2023	Final submission														
					A	13/12/2023	Preliminary concept for review														
					REV	DATE	NOTATION/ AMENDMENT														
						DO NOT SCALE DRAWINGS. CHECK ALL DIMENSIONS. FIGURED DIMENSIONS TAKE PRECEDENCE. THESE DRAWINGS ARE NOT FOR CONSTRUCTION.															
										ISSUE:		DWG No:		PLOTTED:		DRAWN:		CHECKED:		APPROVED:	
										B		LDA04		1		FV + DS		AC		AC	





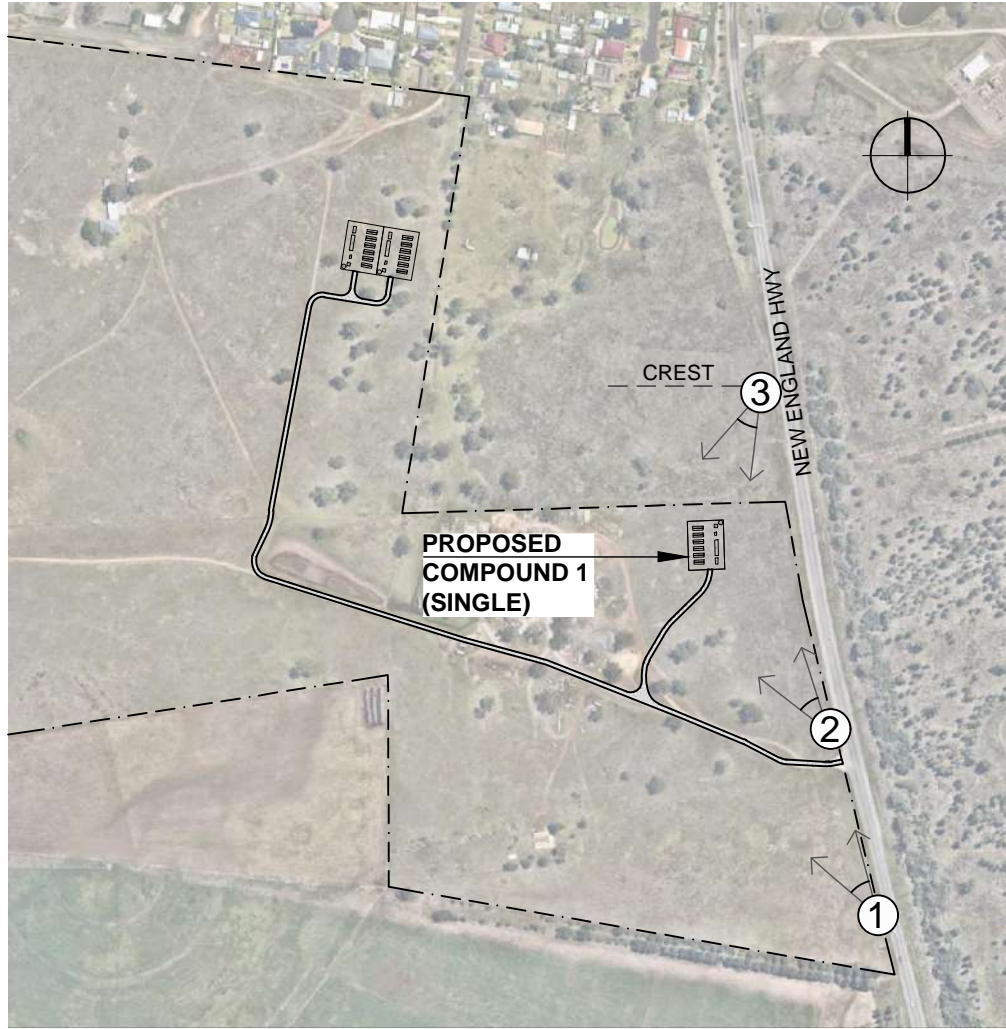
NOT FOR CONSTRUCTION

LANDSCAPE ARCHITECT:			BAR SCALE:	ENGINEERING AND PLANNING:	CLIENT:	PROJECT:	TITLE:	STATUS:
 Conus Landscape Architecture 158 Grandview Rd, New Lambton Hts, NSW 2305. p. 02 4950 9195 e. info@conuslandscapearchitecture.com.au w. conuslandscapearchitecture.com.au abn. 52 144 562 756 Registered Landscape Architect: Anton Conus AILA No. 8420		 Australian Institute of Landscape Architects		HDB <div style="border: 1px solid black; padding: 5px;"> <p>B 18/12/2023 Final submission</p> <p>A 13/12/2023 Preliminary concept for review</p> <p>REV DATE NOTATION/ AMENDMENT</p> </div>	Hive Battery Developments Pty Ltd Quintas Energy	Proposed Battery Energy Storage System (BESS) 981 New England Hwy, Aberdeen <small>DO NOT SCALE DRAWINGS. CHECK ALL DIMENSIONS. FIGURED DIMENSIONS TAKE PRECEDENCE. THESE DRAWINGS ARE NOT FOR CONSTRUCTION</small>	VIEWPOINT 1 (SINGLE) <div style="display: flex; justify-content: space-between;"> <div>ISSUE: B</div> <div>DWG No: LDA05</div> <div>PLOTTED: 1</div> </div>	Development Application <div style="display: flex; justify-content: space-between;"> <div>SCALE: -</div> <div>DATE: 18/12/23</div> <div>JOB No: 23.43</div> </div> <div style="display: flex; justify-content: space-between;"> <div>DRAWN: FV + DS</div> <div>CHECKED: AC</div> <div>APPROVED: AC</div> </div>



NOT FOR CONSTRUCTION

LANDSCAPE ARCHITECT:			BAR SCALE:	ENGINEERING AND PLANNING:	CLIENT:	PROJECT:	TITLE:	STATUS:
 Conus Landscape Architecture 158 Grandview Rd, New Lambton Hts, NSW 2305. p. 02 4950 9195 e. info@conuslandscapearchitecture.com.au w. conuslandscapearchitecture.com.au abn. 52 144 562 756 Registered Landscape Architect: Anton Conus AILA No. 8420		 Australian Institute of Landscape Architects		HDB <div style="border: 1px solid black; padding: 5px;"> <p>B 18/12/2023 Final submission</p> <p>A 13/12/2023 Preliminary concept for review</p> <p>REV DATE NOTATION/ AMENDMENT</p> </div>	Hive Battery Developments Pty Ltd Quintas Energy	Proposed Battery Energy Storage System (BESS) 981 New England Hwy, Aberdeen	VIEWPOINT 2 (SINGLE)	Development Application SCALE: - DATE: 18/12/23 JOB No: 23.43
						DO NOT SCALE DRAWINGS. CHECK ALL DIMENSIONS. FIGURED DIMENSIONS TAKE PRECEDENCE. THESE DRAWINGS ARE NOT FOR CONSTRUCTION	ISSUE: B DWG No: LDA06 PLOTTED: 1	DRAWN: FV + DS CHECKED: AC APPROVED: AC



LOCATION MAP (NOT TO SCALE)



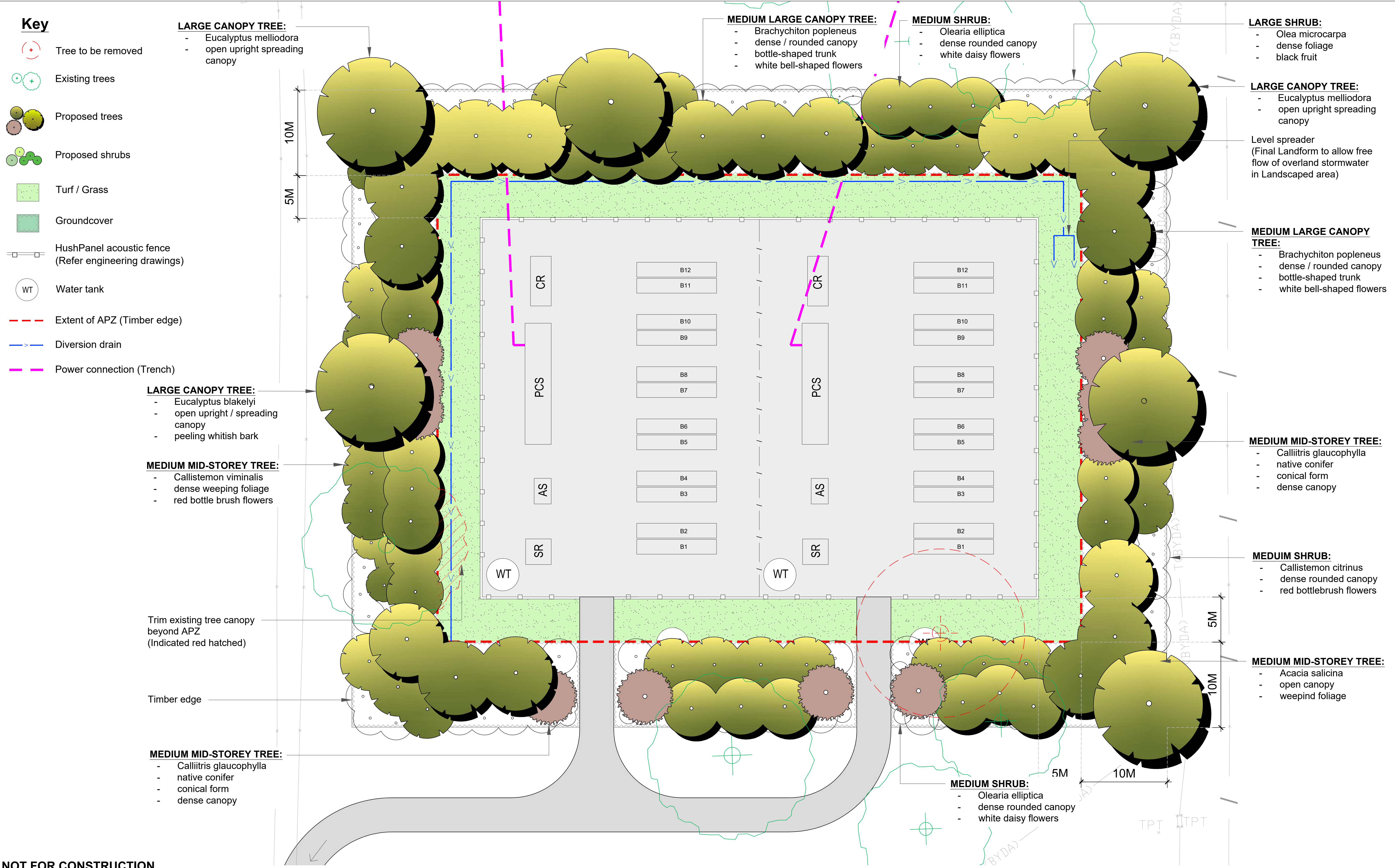
01 07 VIEWPOINT 3 NTS



01 07 VIEWPOINT 3 (PLANTING MATURITY) NTS




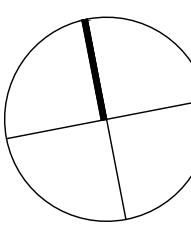
NOT FOR CONSTRUCTION

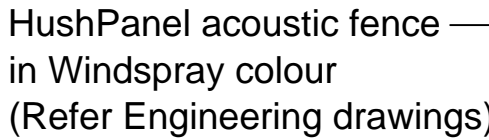
LANDSCAPE ARCHITECT:		BAR SCALE:	ASPECT:	CLIENT:	ENGINEERING AND PLANNING:	PROJECT:			TITLE:			STATUS:		
<div><div><div></div></div><div><div>Conus Landscape Architecture</div><div>158 Grandview Rd, New Lambton Hts, NSW 2305.</div><div><div>p.</div><div>02 4950 9195</div></div><div><div>e.</div><div>info@conuslandscapearchitecture.com.au</div></div><div><div>w.</div><div>conuslandscapearchitecture.com.au</div></div><div><div>abn.</div><div>52 144 562 756</div></div></div><div><div>Australian Institute of Landscape Architects</div></div></div> <div>Registered Landscape Architect: Anton Conus AILA No. 8420</div>				Hive Battery Developments Pty Ltd	HDB	Proposed Battery Energy Storage System (BESS)			VIEWPOINT 3 (SINGLE)			Development Application		
				Quintas Energy		981 New England Hwy, Aberdeen						SCALE:		
						DO NOT SCALE DRAWINGS. CHECK ALL DIMENSIONS. FIGURED DIMENSIONS TAKE PRECEDENCE. THESE DRAWINGS ARE NOT FOR CONSTRUCTION						DATE:		
												JOB No:		
												-		
												18/12/23		
												23.43		



NOT FOR CONSTRUCTION

To New England Hwy

LANDSCAPE ARCHITECT:		BAR SCALE:		ASPECT:		CLIENT:		ENGINEERING AND PLANNING:		PROJECT:		TITLE:		STATUS:			
<div><div></div><div><div>Conus Landscape Architecture</div><div>158 Grandview Rd, New Lambton Hts, NSW 2305.</div><div><div>p. 02 4950 9195</div><div>e. info@conuslandscapearchitecture.com.au</div><div>w. conuslandscapearchitecture.com.au</div><div>abn. 52 144 562 756</div></div></div><div><div>Registered Landscape Architect: Anton Conus AILA No. 8420</div></div></div>		<div><div></div><div>Australian Institute of Landscape Architects</div></div>		<div><div></div><div>1:200@ A1</div></div>		<div><div></div></div>		<div><div>Hive Battery Developments Pty Ltd</div><div>Quintas Energy</div></div>		<div><div>HDB</div></div>		<div><div>Proposed Battery Energy Storage System (BESS)</div><div>981 New England Hwy, Aberdeen</div></div>		<div><div>LANDSCAPE PLAN: COMPOUND 2 (DOUBLE)</div></div>		<div><div>Development Application</div></div>	
						<div><div><div>B</div><div>18/12/2023</div><div>Final submission</div></div></div>								<div><div>SCALE:</div><div>1:200</div></div>			
						<div><div><div>A</div><div>13/12/2023</div><div>Preliminary concept for review</div></div></div>								<div><div>DATE:</div><div>18/12/23</div></div>			
						<div><div><div>REV</div><div>DATE</div><div>NOTATION/ AMENDMENT</div></div></div>								<div><div>JOB No:</div><div>23.40</div></div>			
						<div><div>DO NOT SCALE DRAWINGS. CHECK ALL DIMENSIONS. FIGURED DIMENSIONS TAKE PRECEDENCE. THESE DRAWINGS ARE NOT FOR CONSTRUCTION</div></div>								<div><div>DRAWN:</div><div>DS</div></div>			
										<div><div>ISSUE:</div><div>B</div></div>		<div><div>DWG No:</div><div>LDA08</div></div>		<div><div>PLOTTED:</div><div>1</div></div>		<div><div>CHECKED:</div><div>AC</div></div>	
														<div><div>APPROVED:</div><div>AC</div></div>			



01 ELEVATION D1 + D2 1:200
09






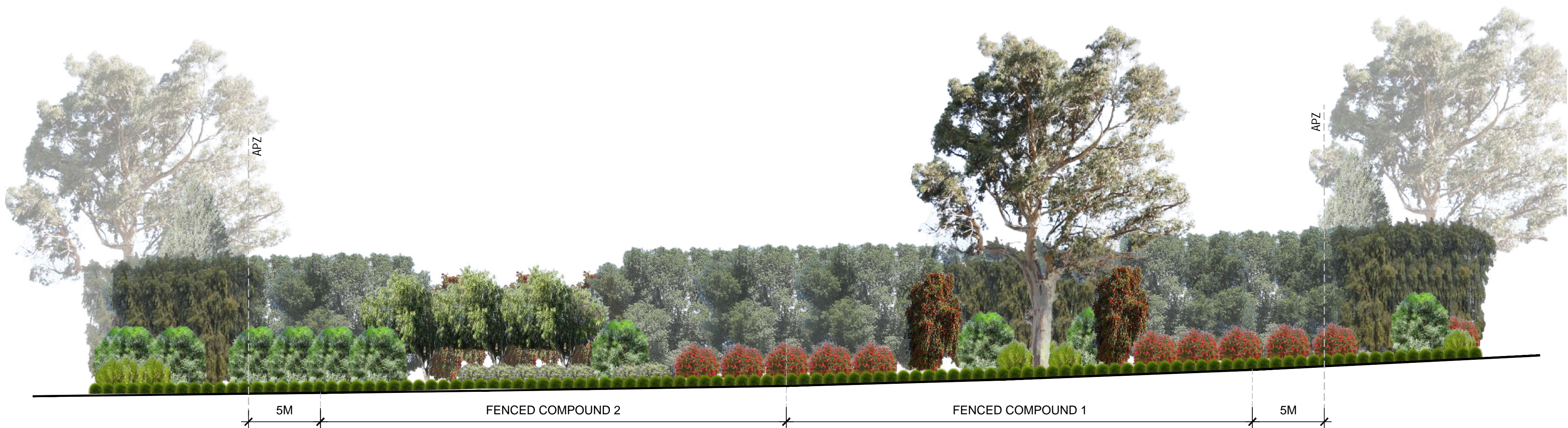
02 ELEVATION D1 + D2 (1 YEAR OF PLANTING) 1:200
09



03 ELEVATION D1 + D2 (5 YEARS OF PLANTING) 1:200
09

NOT FOR CONSTRUCTION

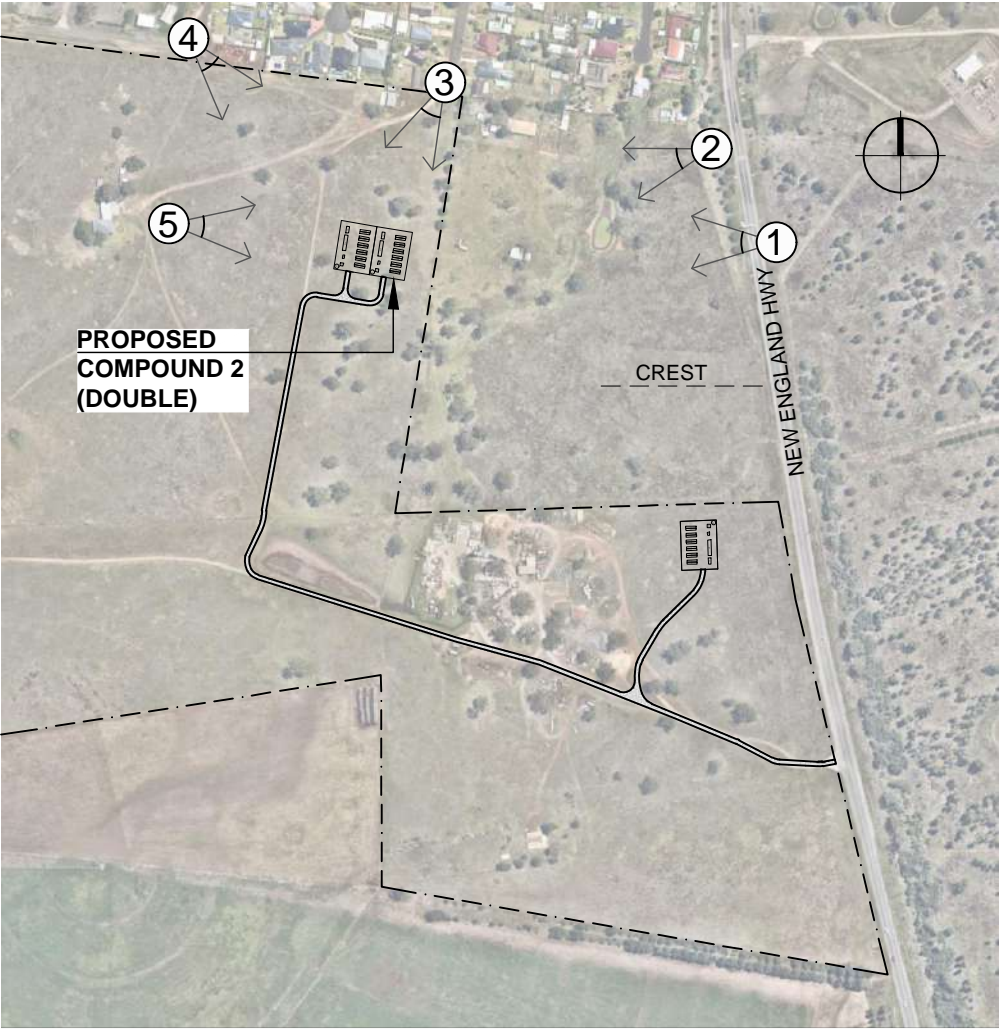
LANDSCAPE ARCHITECT:		BAR SCALE:		ASPECT:		CLIENT:		ENGINEERING AND PLANNING:		PROJECT:		TITLE:		STATUS:																										
<div><p>Conus Landscape Architecture 198 Grandview Rd, New Lomlon Hts, NSW 2305.</p><p>p. 02 4950 9195 e. info@conuslandscapearchitecture.com.au w. conuslandscapearchitecture.com.au o. 62 144 562 756</p><p>Registered Landscape Architect: Anton Conus AILA No. 8420</p></div> <div><p>Australian Institute of Landscape Architects</p></div> <div><p>1:200 @ A1</p></div> <div><p>Hive Battery Developments Pty Ltd</p><p>Quintas Energy</p></div> <div><p>HDB</p></div> <div><table><tr><td></td><td></td><td></td></tr><tr><td>B</td><td>18/12/2023</td><td>Final submission</td></tr><tr><td>A</td><td>13/12/2023</td><td>Preliminary concept for review</td></tr><tr><td>REV</td><td>DATE</td><td>NOTATION/ AMENDMENT</td></tr></table><p>DO NOT SCALE DRAWINGS. CHECK ALL DIMENSIONS. FIGURED DIMENSIONS TAKE PRECEDENCE. THESE DRAWINGS ARE NOT FOR CONSTRUCTION.</p></div> <div><p>Proposed Battery Energy Storage System (BESS)</p><p>981 New England Hwy, Aberdeen</p></div> <div><p>ELEVATION D1 + D2 (1-3 YEARS)</p></div> <div><table><tr><td>ISSUE:</td><td>DWG No:</td><td>PLOTTED:</td><td>DRAWN:</td><td>CHECKED:</td><td>APPROVED:</td></tr><tr><td>B</td><td>LDA09</td><td>1</td><td>DS</td><td>AC</td><td>AC</td></tr></table></div> <tr><td colspan="2">Development Application</td><td colspan="2">SCALE:</td><td colspan="2">DATE:</td><td colspan="2">JOB No:</td></tr> <tr><td colspan="2"></td><td colspan="2">1:200</td><td colspan="2">18/12/23</td><td colspan="2">23.40</td></tr>				B	18/12/2023	Final submission	A	13/12/2023	Preliminary concept for review	REV	DATE	NOTATION/ AMENDMENT	ISSUE:	DWG No:	PLOTTED:	DRAWN:	CHECKED:	APPROVED:	B	LDA09	1	DS	AC	AC	Development Application		SCALE:		DATE:		JOB No:				1:200		18/12/23		23.40	
	B	18/12/2023	Final submission																																					
	A	13/12/2023	Preliminary concept for review																																					
	REV	DATE	NOTATION/ AMENDMENT																																					
ISSUE:	DWG No:	PLOTTED:	DRAWN:	CHECKED:	APPROVED:																																			
B	LDA09	1	DS	AC	AC																																			
Development Application		SCALE:		DATE:		JOB No:																																		
		1:200		18/12/23		23.40																																		



01
10 ELEVATION D1 + D2 (MATURED STAGE) 1:200

NOT FOR CONSTRUCTION

LANDSCAPE ARCHITECT:			BAR SCALE:		ASPECT:		CLIENT:		ENGINEERING AND PLANNING:			PROJECT:	TITLE:			STATUS:		
<div><div><div></div><div>conusLANDSCAPE ARCHITECTURE</div></div><div>Conus Landscape Architecture 158 Grandview Rd, New Lambton Hts, NSW 2305. p. 02 4950 9195 e. info@conuslandscapearchitecture.com.au w. conuslandscapearchitecture.com.au o. 52 144 562 756</div></div> <div>Registered Landscape Architect: Anton Conus AILA No. 8420</div>		<div><div><div></div><div>Australian Institute of Landscape Architects</div></div></div>			Hive Battery Developments Pty Ltd	HDB				Proposed Battery Energy Storage System (BESS)	981 New England Hwy, Aberdeen		ELEVATION D1 + D2 (MATURED)			Development Application		
																SCALE:	DATE:	JOB No:
																AS INDICATED	18/12/23	23.40
																ISSUE:		DWG No:
B		LDA10	1		DS			AC	AC									



LOCATION MAP (NOT TO SCALE)



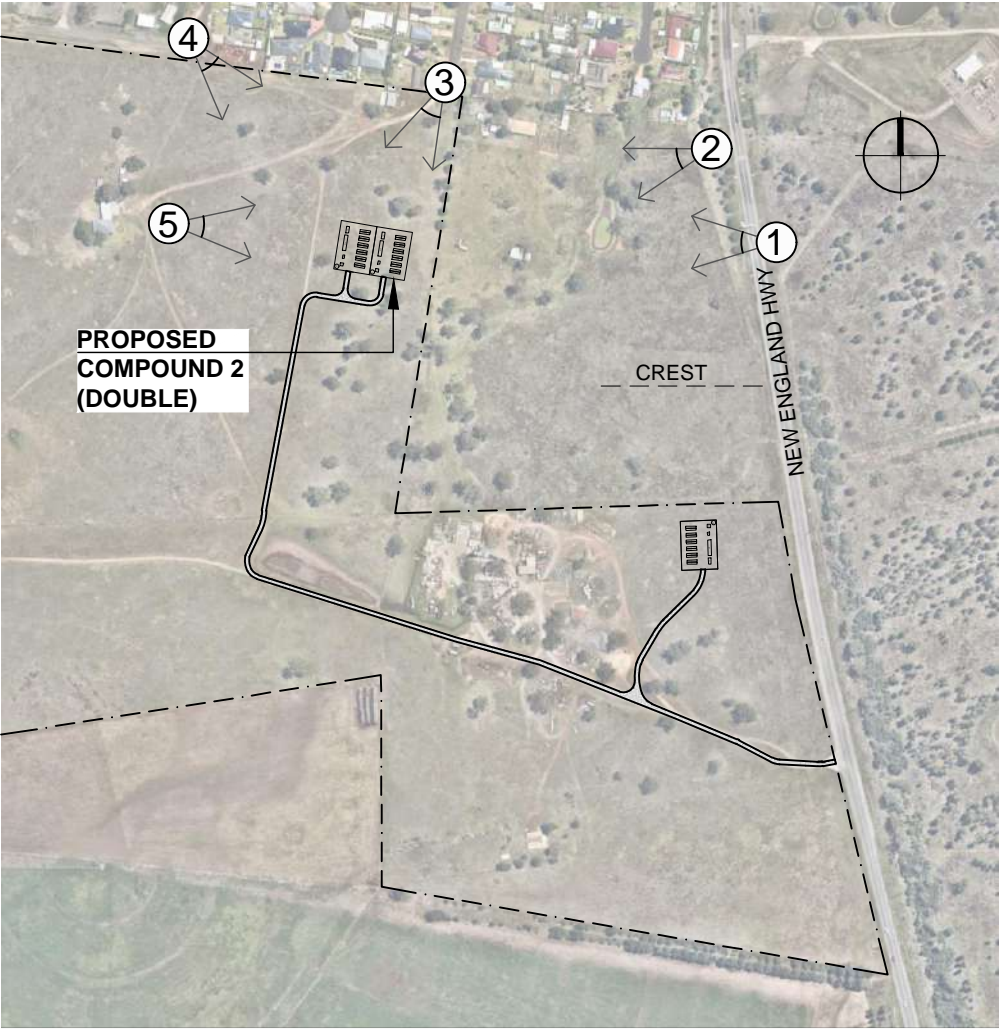
01 11 VIEWPOINT 1 NTS



01 11 VIEWPOINT 1 (PLANTING MATURITY) NTS

NOT FOR CONSTRUCTION

LANDSCAPE ARCHITECT:			BAR SCALE:	ENGINEERING AND PLANNING:	ASPECT:	CLIENT:	PROJECT:			TITLE:			STATUS:		
<div><div><div></div><div>Australian Institute of Landscape Architects</div></div></div> <div><div><div>conus</div><div>LANDSCAPE ARCHITECTURE</div><div>02 49 50 9195 info@conuslandscapearchitecture.com.au conuslandscapearchitecture.com.au 52 144 562 756</div><div>Registered Landscape Architect: Anton Conus AILA No. 8420</div></div></div>	<div><div><div></div><div>Conus Landscape Architecture</div><div>158 Grandview Rd, New Lambton Hts, NSW 2305.</div></div></div>			<div><div><div></div><div>Hive Battery Developments Pty Ltd</div></div></div> <div><div><div></div><div>Quintas Energy</div></div></div>	<div><div><div></div><div>HDB</div></div></div>	<div><div><div></div><div>Hive Battery Developments Pty Ltd</div></div></div>	<div><div><div></div><div>Proposed Battery Energy Storage System (BESS)</div><div>981 New England Hwy, Aberdeen</div></div></div>			<div><div><div></div><div>VIEWPOINT 1 (DOUBLE)</div></div></div>			<div><div><div></div><div>Development Application</div></div></div>		



LOCATION MAP (NOT TO SCALE)



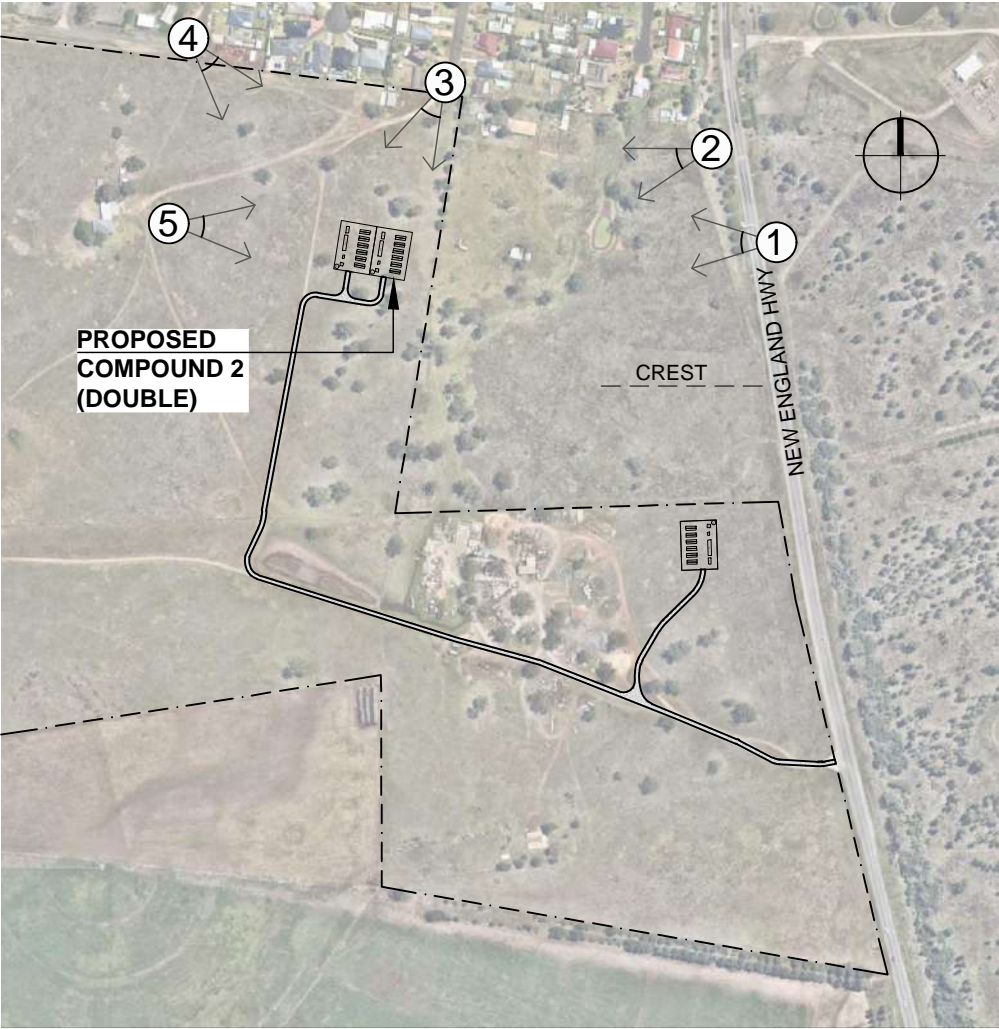
01
12 VIEWPOINT 2 NTS



01
12 VIEWPOINT 2 (PLANTING MATURITY) NTS

NOT FOR CONSTRUCTION

LANDSCAPE ARCHITECT:		BAR SCALE:	ASPECT:	CLIENT:	ENGINEERING AND PLANNING:	PROJECT:			TITLE:			STATUS:		
<div><div><div></div></div><div><div>Conus Landscape Architecture</div><div>158 Grandview Rd, New Lambton Hts, NSW 2305.</div><div><div>p.</div><div>02 4950 9195</div></div><div><div>e.</div><div>info@conuslandscapearchitecture.com.au</div></div><div><div>w.</div><div>conuslandscapearchitecture.com.au</div></div><div><div>abn.</div><div>52 144 562 756</div></div></div><div><div>Australian Institute of Landscape Architects</div></div><div>Registered Landscape Architect: Anton Conus AILA No. 8420</div></div>		<div><div><div></div></div><div><div>Hive Battery Developments Pty Ltd</div></div><div><div>Quintas Energy</div></div></div>		<div><div><div></div></div><div><div>HDB</div></div></div>		<div><div><div></div></div><div><div>Proposed Battery Energy Storage System (BESS)</div></div><div><div>981 New England Hwy, Aberdeen</div></div></div>			<div><div><div></div></div><div><div>VIEWPOINT 2 (DOUBLE)</div></div></div>			<div><div><div></div></div><div><div>Development Application</div></div><div><div>SCALE: DATE: JOB No:</div></div><div><div>- 18/12/23 23.40</div></div><div><div>DRAWN: CHECKED: APPROVED:</div></div><div><div>DS AC AC</div></div></div>		
REV		DATE		NOTATION/ AMENDMENT		DO NOT SCALE DRAWINGS. CHECK ALL DIMENSIONS. FIGURED DIMENSIONS TAKE PRECEDENCE. THESE DRAWINGS ARE NOT FOR CONSTRUCTION			ISSUE:			DWG No:		
B		18/12/2023		Final submission		1			B			LDA12		
A		13/12/2023		Preliminary concept for review										



LOCATION MAP (NOT TO SCALE)



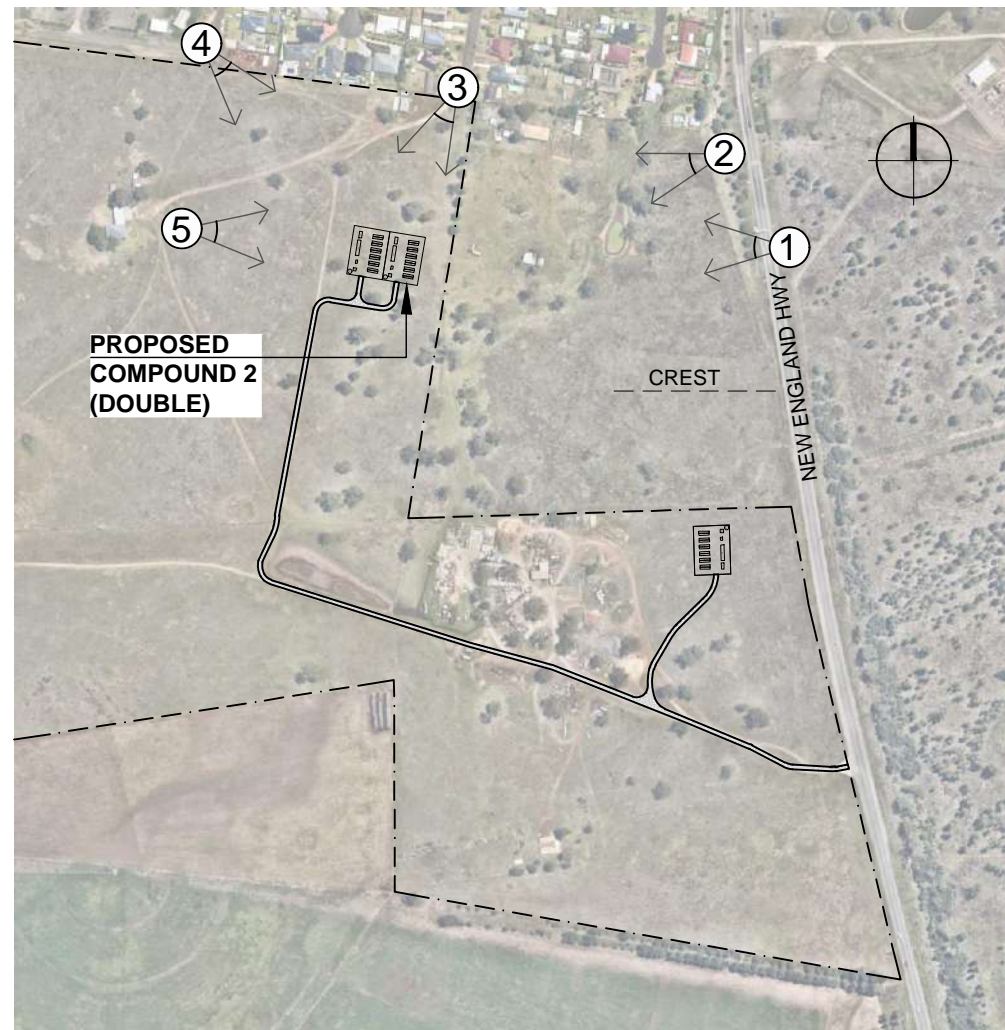
01
13 VIEWPOINT 3 NTS





01
13 VIEWPOINT 3 (PLANTING MATURITY) NTS

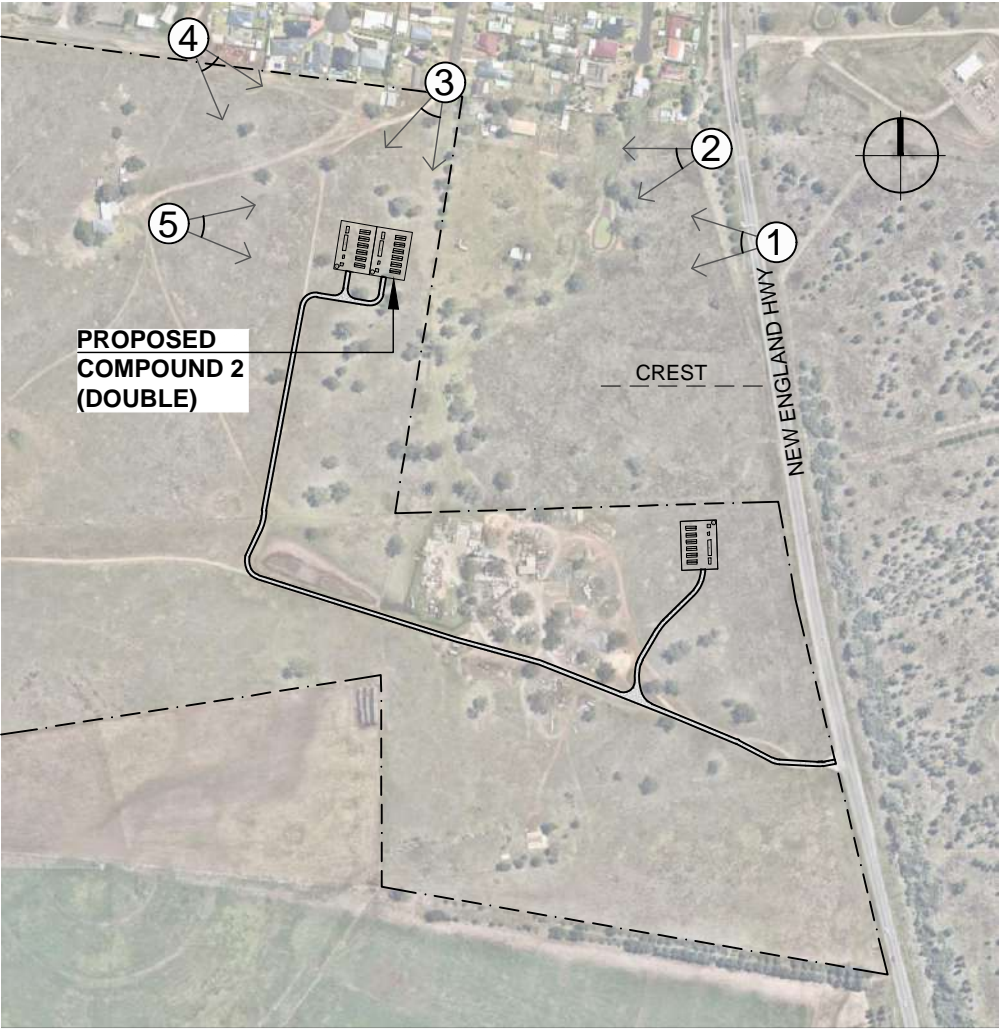
NOT FOR CONSTRUCTION

LANDSCAPE ARCHITECT:		BAR SCALE:	ENGINEERING AND PLANNING:	ASPECT:	CLIENT:	PROJECT:	TITLE:	STATUS:	
<div><div><div></div><div>conus</div><div>LANDSCAPE ARCHITECTURE</div></div><div>Conus Landscape Architecture 158 Grandview Rd, New Lambton Hts, NSW 2305. p. 02 4950 9195 e. info@conuslandscapearchitecture.com.au w. conuslandscapearchitecture.com.au abn. 52 144 562 756</div><div>Australian Institute of Landscape Architects</div></div> <div>Registered Landscape Architect: Anton Conus AILA No. 8420</div>	<div><div><div></div><div>Hive Battery Developments Pty Ltd</div><div>Quintas Energy</div></div></div>		<div>HDB</div>		<div>Proposed Battery Energy Storage System (BESS)</div> <div>981 New England Hwy, Aberdeen</div>	<div>VIEWPOINT 3 (DOUBLE)</div>	Development Application		
							SCALE:	DATE:	JOB No:
							-	18/12/23	23.40
							ISSUE:	DWG No:	PLOTTED:
							B	LDA13	1
						DRAWN:		CHECKED:	APPROVED:
						DS		AC	AC



NOT FOR CONSTRUCTION

LANDSCAPE ARCHITECT:			BAR SCALE:	ENGINEERING AND PLANNING:	CLIENT:	PROJECT:			TITLE:			STATUS:		
<div><p>Conus Landscape Architecture 158 Grandview Rd, New Lambton Hts, NSW 2305.</p><p>p. 02 4950 9195 e. info@conuslandscapearchitecture.com.au w. conuslandscapearchitecture.com.au abn. 52 144 562 756</p><p>Registered Landscape Architect: Anton Conus AILA No. 8420</p></div>		<div><p>Australian Institute of Landscape Architects</p></div>		<div><p>Hive Battery Developments Pty Ltd</p><p>Quintas Energy</p></div>	<div><p>HDB</p></div>			<div><p>Proposed Battery Energy Storage System (BESS)</p><p>981 New England Hwy, Aberdeen</p></div>	<div><p>VIEWPOINT 4 (DOUBLE)</p></div>			<div><p>Development Application</p></div>		
			B			18/12/2023	Final submission							
			A			13/12/2023	Preliminary concept for review							
			REV			DATE	NOTATION/ AMENDMENT							
					DO NOT SCALE DRAWINGS. CHECK ALL DIMENSIONS. FIGURED DIMENSIONS TAKE PRECEDENCE. THESE DRAWINGS ARE NOT FOR CONSTRUCTION			ISSUE:	DWG No:	PLOTTED:	DRAWN:	CHECKED:	APPROVED:	
								B	LDA14	1	DS	AC	AC	



LOCATION MAP (NOT TO SCALE)



01 15 VIEWPOINT 5 NTS



01 15 VIEWPOINT 5 (PLANTING MATURITY) NTS

NOT FOR CONSTRUCTION

LANDSCAPE ARCHITECT:			BAR SCALE:	ENGINEERING AND PLANNING:	ASPECT:	CLIENT:	PROJECT:			TITLE:			STATUS:								
<div><div><div></div></div><div><div>Conus Landscape Architecture</div><div>158 Grandview Rd, New Lambton Hts, NSW 2305.</div><div><div>p.</div><div>02 4950 9195</div></div><div><div>e.</div><div>info@conuslandscapearchitecture.com.au</div></div><div><div>w.</div><div>conuslandscapearchitecture.com.au</div></div><div><div>abn.</div><div>52 144 562 756</div></div></div><div><div>Australian Institute of Landscape Architects</div></div><div>Registered Landscape Architect: Anton Conus AILA No. 8420</div></div>				Hive Battery Developments Pty Ltd	HDB	Proposed Battery Energy Storage System (BESS)			VIEWPOINT 5 (DOUBLE)			Development Application									
						981 New England Hwy, Aberdeen															
						B			18/12/2023			Final submission									
						A			13/12/2023			Preliminary concept for review									
REV			DATE			NOTATION/ AMENDMENT															
						DO NOT SCALE DRAWINGS. CHECK ALL DIMENSIONS. FIGURED DIMENSIONS TAKE PRECEDENCE. THESE DRAWINGS ARE NOT FOR CONSTRUCTION															
									ISSUE:			DWG No:		PLOTTED:		DRAWN:		CHECKED:		APPROVED:	
									B			LDA15		1		DS		AC		AC	

MAINTENANCE SPECIFICATION
(52 weeks Plant Establishment Period)

Maintenance of the proposed development will be in accordance with “Muswellbrook Council's DCP, 2010”.

1. GENERAL

- The Contractor will be responsible for maintaining all areas within private property as follows:
- All initial planting should be healthy, pest and disease free.
 - All plants should be monitored for pests and diseases every three days for the first four weeks and then every three months. Plants effected badly by pests and diseases should be removed, disposed of off site and replaced.
 - Young seedlings are desirable to some species such as rabbits, hares and macropods and if they are considered a problem, plastic tree guards should be used around each plant or reinstated where removed.
 - Biological controls are the preferred treatment for pests and diseases. Any chemicals used for pest and disease control must be registered for use in aquatic situations by the National Registration Authority, as indicated on the label.
 - Treatment of pests and diseases should be conducted at the same time to avoid reinfestation from adjacent areas.
 - Grassed areas will be mowed and landscape beds mulched. Any damage done to nature strip shall be repaired including replacement of street trees and restoration of grassed areas as required.
 - Mowing will be kept to a blade height of 30mm-70mm and frequency will be in accordance with the seasons. All edges will be trimmed with a whipper-snipp as frequently as mowing is required.
 - Mowing will vary seasonally. Once in a three week cycle is adequate within most months other than ‘deep summer’ and ‘deep winter’ environmental conditions.
 - Fertiliser shall be applied to manufacturer's requirements.
 - Weeding maintenance should be monitored and completed when periodically.
 - Weeds will be effectively controlled by the use of mulching and densely planting groundcovers to combat invasion. Where necessary herbicides may be used to control weed infestation.
 - Plants will be checked for pest and diseases regularly, any pesticides used will be broad range and have low toxicity.
 - Prune as required only. Prune in accordance with Ross Clark’s ‘Nat Spec’.
 - Plant replacement – dead and dying plants should be replaced immediately by the Landscape Contractor; vandalised plants should be replaced to a maximum of two times by the Landscape Contractor. Thereafter, plants replaced should be at the client's expense. All trees to be replaced to be accordance with Ross Clark’s ‘NatSpec’.
 - Stakes and ties of trees to be removed at the end of 52 week
 - Using an irrigation system connected to an outside water tank, turf and planting areas to be watered three times per week within the first month, then twice weekly for the next two months. Thereafter, taper to once per month to harden site conditions whilst allowing the maximum root growth within the initial quarter.
 - Watering frequency will vary according to season and weather variations. Council's water restriction policy must be adhered to at all times.
 - A Maintenance Log is to be kept by the contractor and shown to the Landscape Architect upon request.

2. TREES AND SHRUBS

2.1 New trees - first 2 months following planting

- Monitor soil moisture as this will vary depending on soil and weather conditions.
- As a general guide, water each tree with 10 litres of water three times in the first two weeks, then once per week and 5 litres of water for each shrub.
- Maintain stakes and tree guards (if applicable) vertically and replace immediately if broken.
- Remove encroaching grasses and weeds from the mulched area using herbicides at label rates, or by hand removal.
- Inspect foliage, branches and trunk for any indications of pest and disease infestations. Control where necessary.
- Replenish mulch to retain an even 75mm depth.
- Replace failed trees immediately.



2.2 New trees - from 2-12 months following planting

- Inspect trees and shrubs monthly and water at 10 litres per tree, 5 litres per shrub if required.
- Retain mulch at 75mm depth at all times.
- Remove hessian ties if trees are self-supporting after six months, or re-tie as needed.
- All stakes must be removed by the end of the maintenance period and disposed of in a responsible manner.
- Retain hardwood stakes as markers for the twelve month period.
- Keep the mulched area free of grasses and weeds at all times.
- Inspect foliage, branches and trunk for any indications of pest and disease infestations. Control where necessary.
- After six months, lightly prune trees which need branch direction or branch removal to permit traffic access or pedestrian access. Do not top or lop any tree. Carry out formative pruning to remove any low branches and encourage a clear stem.
- Replace any tree which is dead or in irreversible decline.
- Twelve months after planting, fertilise trees with slow release fertiliser at manufacturer's recommended rates.

2.3 Maintenance of established trees and shrubs

- Inspect trees at six monthly intervals in the second and third year of growth.
- Retain mulch at 75mm depth during this period.
- Remove ties and stakes if trees are self-supporting or re-tie if still needed.
- Remove grass and weeds from mulched area.
- Inspect foliage, branches and trunk for any indications of pest and disease infestations. Control where necessary.
- Prune trees which need directional branch pruning to produce one main trunk to allow pedestrian and traffic access.
- Replace any tree which is dead or in irreversible decline.
- For the first three years after planting, fertilise trees annually with slow release fertiliser at manufacturers recommended rates.
- After trees have been growing for at least three years and have established well and are flourishing, inspection should be made at least annually. Any necessary pruning or tree surgery should be carried out as required to maintain healthy growth.
- When mature trees have been removed, the stump is to be ground out and the areas around made good. Position trees in the area adjacent to the existing tree, or consult Council's Landscape Architect for an alternative location.

NOT FOR CONSTRUCTION

LANDSCAPE ARCHITECT:			BAR SCALE:	ASPECT:	CLIENT:	ENGINEERING AND PLANNING:			PROJECT:	TITLE:			STATUS:		
<div><div></div><div>Conus Landscape Architecture 158 Grandview Rd, New Lambton Hts, NSW 2305. p. 02 4950 9195 e. info@conuslandscapearchitecture.com.au w. conuslandscapearchitecture.com.au o/n. 52 144 562 756</div></div> <div>Registered Landscape Architect: Anton Conus AILA No. 8420</div>		<div></div> <div>Australian Institute of Landscape Architects</div>			Hive Battery Developments Pty Ltd	HDB			Proposed Battery Energy Storage System (BESS) 981 New England Hwy, Aberdeen	MAINTENANCE SPECIFICATION			Development Application		
			B	18/12/2023	Final submission										
			A	13/12/2023	Preliminary concept for review										
			REV	DATE	NOTATION/ AMENDMENT										
						DO NOT SCALE DRAWINGS. CHECK ALL DIMENSIONS. FIGURED DIMENSIONS TAKE PRECEDENCE. THESE DRAWINGS ARE NOT FOR CONSTRUCTION			ISSUE:	DWG No:	PLOTTED:	DRAWN:	CHECKED:	APPROVED:	
									B	LDA16	1	DS	AC	AC	